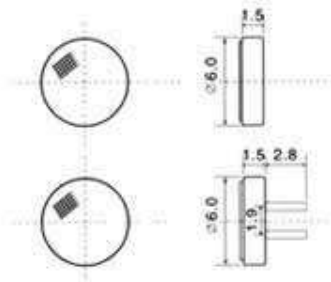


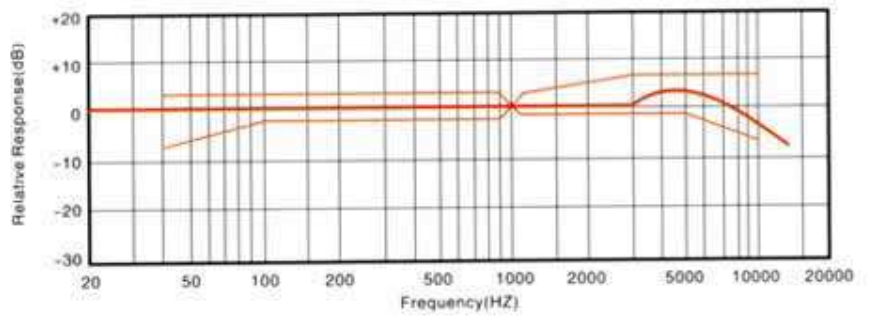


contact:

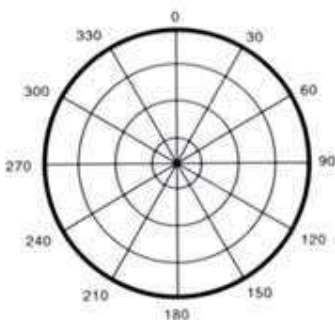
### Dimension Drawing(Unit:mm)



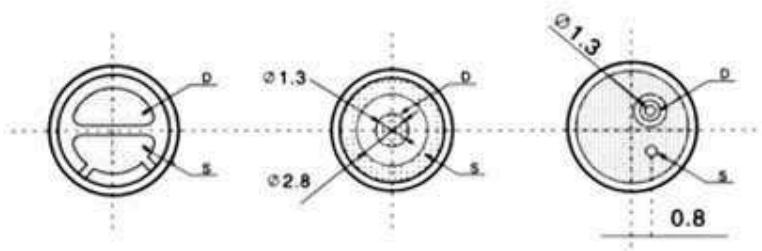
### Typical Frequency Response Curve



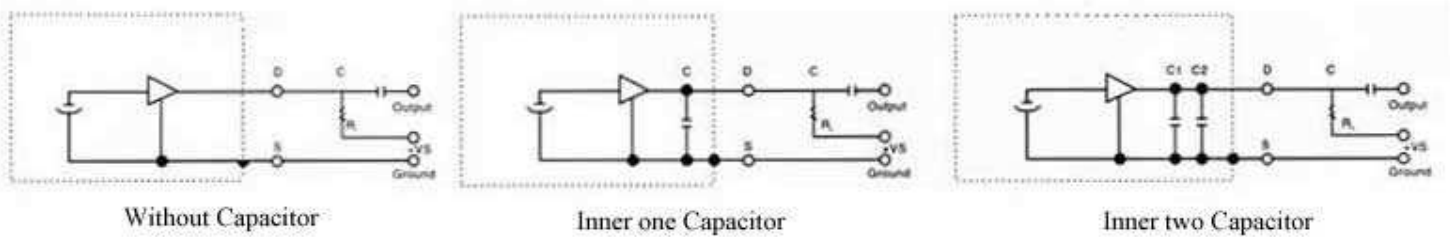
### Polar Directivity Pattern



### Connection Method



### Measure Cricuit



### *Detail Specifications:*

Model No.	DGO6027DD(-PC1033)		
Sensitivity(0dB=1v/ $\mu$ bar,1KHz)	-38dB ~ -48dB	Operation Voltage(Max./Std.)	2V
Impedance	Low impedance(2.2K $\Omega$ -30% )	Resistance(RL):	2.2K $\Omega$
Directivity	Omni-directinal	Current Consumption:	Max.0.5.mA
Frequency	20~16, 000Hz	Sensitivity Reduction	Within -3dB at 1.5V
Max.operation voltage	10V	S/N Ratio	More than 60dB